

PylontechAuto App

Quick Guide V1.1

The pictures are for illustration purposes only.
The actual interface prevails.

Register & Log in

Register and log into your account.



Account Login

Verification Code Login

Register

*Verification code login is only supported after you have successfully registered an email account.

*The interface for Android is different. The actual interface prevails.

Select Battery Model

Click ⊕ to enter model selection page and select your model.



Connect

The connection method in this part applies to RT12100B-G31, RV12200, and RT2450-G31.



Add devices according to your actual needs.



Extension Mode

Click here to add Kit-C1 and then batteries.

In addition to viewing battery information, you can extend external communication and control functions of the devices with Kit-C1.

Basic Mode

Click here to add batteries.

You can view battery information on Pylontech Auto APP after you networked the batteries.

*For more information about extension mode and basic mode, see the User Manual.

*All device in Device List can be connected directly. You can click the name in the list to finish connection.

Connect



(Optional)

Scan the SN barcode or enter the Device SN to add Kit-C1.



Connect



Set the number of series & parallel connection and select a channel.



*The first device added will be the host device.

*For the limit of devices in series & parallel connection, see the User Manual.

*If device connection is unstable, please change a channel.

Connect

- 1 Select Connection Mode
- 2 (Optional) Add Kit-C1
- 3 Configure Battery Connection & Select Channel
- 4 Add Battery/Batteries
- 5 Finish Connection

Scan/enter the product SN bar code to add a battery or multiple batteries.



Connect



Click **Confirm** and next step to finish battery connection after all devices have been added.

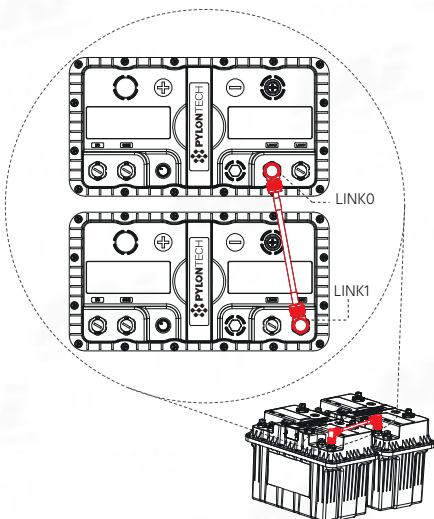


Connect

The connection method in this part applies to RT12100-G31.

- 1 Connect Device with Communication Cable
- 2 Pair Device with Mobile Phone
- 3 Configure Battery Connection
- 4 Finish Connection

Connect the devices with the matched communication cable(s), and turn on the devices.



*The picture is for illustration purposes only.

*When connecting the devices in series and parallel, please connect them in series first and then in parallel. Otherwise the data read by the APP may be inaccurate.

*For more information about the connection with communication cables, see the User Manual.

Connect

1

Connect Device with
Communication Cable

2

Pair Device with
Mobile Phone

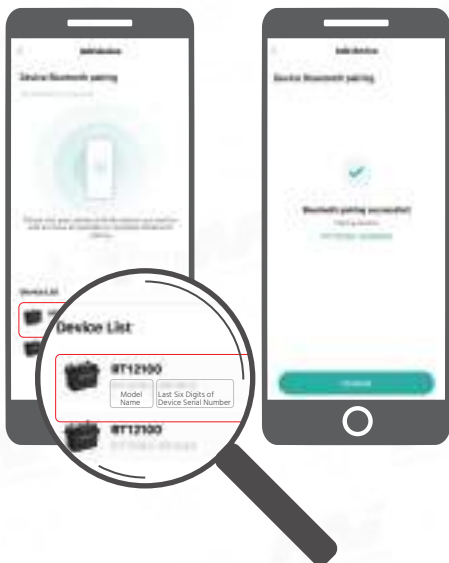
3

Configure Battery
Connection

4

Finish
Connection

Keep your phone close to the device, and click its name to pair it with your phone.



Connect

1

Connect Device with
Communication Cable

2

Pair Device with
Mobile Phone

3

Configure Battery
Connection

4

Finish
Connection

Follow the steps below to set the number of series & parallel connection.



Connect

1

Connect Device with
Communication Cable

2

Pair Device with
Mobile Phone

3

Configure Battery
Connection

4

Finish
Connection

Click **Confirm** to finish battery connection.

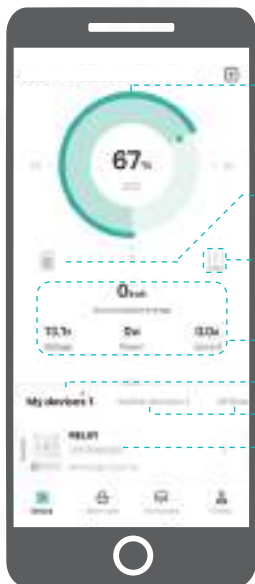


Enable Heating Film

Heating film control is supported for RT12100G31.



View Battery Information



Overview Page

State of Charge

- Idle Mode
- Charging Mode
- Discharging Mode

- Heating Film Disabled
- Heating Film Enabled OR Heating Film Off
- Heating Film On

*For specific meaning of the icon, see the User Manual of corresponding device.

Basic Information of Devices

Devices that Have Ever Been Connected Successfully

Online/Offline Devices

Slide device name right to left to unlock more functions.

Connected Device



Disconnected Device



*RT12100G31 does not support network reset.

View Battery Information



Detail Page

More Functions



See more Pylontech products.

Communicate with other users.

Edit profile information, view Q&A, and etc.

FAQ

Why can't I register an account?

- The email address has been registered. Please log in directly.
- The email address is wrong. Please enter the correct address.
- Verification information is blocked. Please check the email settings.

Why can't I select the battery model?

- If a blank page appears after clicking + on the overview page, and you cannot select the battery model. Please connect to the Wi-Fi network or turn on cellular data.

Bluetooth pairing failed?

- The Bluetooth of the phone is disabled. Please enable Bluetooth.
- The battery is not turned on. Please turn on the battery.

If the issue persists after solving the problems above, please contact Sys.repair@pylontech.com.cn.

The interface display does not fit my phone?

- Please send several screenshots of the interface and your phone model to Sys.repair@pylontech.com.cn.

*If the above content cannot solve your problem, please go to Profile → System Q&A for more information.